

WEB Configuration Touch Panel



Mobile phone、PAD、
Computer can monitor
configuration pages in real
time.

Open data interfaces are
integrated by third party
systems



WEB configuration Touch Panel

1	W7-1041	3
2	W7-1041-GW	3
3	W10-1041	6
4	W10-1041-GW	6
5	W15-1041	9
6	W15-1041-GW	9

Model	Supported Points	Supported Protols	Interfaces	Functional features
W7-1041	5120	close to 200	1 ethernet 4 RS485,1 RS232	1024*600
W7-1041-GW	5120	close to 200	1 ethernet 4 RS485,1 RS232	1024*600 With gateway
W10-1041	5120	close to 200	1 ethernet 4 RS485,1 RS232	1280*800
W10-1041-GW	5120	close to 200	1 ethernet 4 RS485,1 RS232	1280*800 With gateway
W15-1041	5120	close to 200	1 ethernet 4 RS485,1 RS232	1920*1680
W15-1041-GW	5120	close to 200	1 ethernet 4 RS485,1 RS232	1920*1680 With gateway

W7-1041、W7-1041-GW

7" Touch Panel Product mode:W7-1041,W7-1041-GW

Functional description: W7-1041, W7-1041-GW is 7" WEB configuration touch panel . It is a new product independent research and development from Shanghai Sunfull , can collect real-time monitor data and directly into the configuration pages. Touch Panel has characteristic of conventional general configuration is easy to operate, and it can run on an embedded system features Compared with other configuration software.The biggest bright spot is based entirely on WEB development, the configurations of the user to create projects, can be downloaded to touch panel, phone、PAD or PC can access via browser, and open data interface by a third party system integration.

Application fields : W7-1041-GW support into the standard BACnet protocol standard Modbus protocol, or SMS alarm project to upload the cloud Applications in BA, or some unusual control equipment industry connections, such as PLC elevator fire lighting control system instrument meter, etc. So users can through the WEB configuration screen, or phone、PAD 、PC monitor to the field device.

Runtime environment:

OS : Windows XP/Win 7/Win8/Win10/Win Server 2003/Win Server2008/Win Vista etc.

Browser : IE11 (and above) 、 Safari、 Google Chrome、 firefox、 Opera etc.

Register Type&Num

Number of Registers is dynamic, each register can be builded up to 5120 points.

Supported BACnet type and number are shown below. Supported Modbus type and number are shown below.

BACnet Register-type	BACnet Register-number	Modbus Register-type	Modbus Register-number
AI (Read only)	5120 (0~5119)	0X(Coil Status) (Read and Write)	5120 (1~5121)
AO (Read and Write)	5120 (0~5119)	1X(Input Status) (Read Only)	5120 (1~5121)
AV (Read and Write)	5120 (0~5119)	4X(Holding Register) (Read and Write)	5120 (1~10241)
BI (Read only)	5120 (0~5119)	3X(Input Register) (Read only)	5120 (1~10241)
BO (Read and Write)	5120 (0~5119)		
BV (Read and Write)	5120 (0~5119)		
MI (Read only)	5120 (0~5119)		
MO (Read and Write)	5120 (0~5119)		
MV (Read and Write)	5120 (0~5119)		

Notes:

1.4X and 3X register address = translocation register address *2+1

0X and 1X register address = translocation register address +1

2. The data type of 4X and 3X can only be Float

W7-1041

W10-1041

W15-1041

7" Touch Panel Product mode :W7-1041、 W7-1041-GW (With gateway function)



Software Features:

-Green and free installation, support both Chinese and English;

-W7-1041-GW support was also converted to the BACnet server、 Modbus server 、 to upload the cloud;

-Support SMS E-mail and other communication methods to send alarm information;

-Support JS script to achieve logical control;

-Support user group management, configuration screen monitoring can set permissions;

-Supporting historical storage;

-A custom function that supports multiple forms of timer events to facilitate extended application;

-Support LAN, easy realization of remote viewing and control of touch screen via phone、 PAD、 PC;

-Add new private protocol support, within 2 weeks;

W7-1041

W10-1041

W15-1041

Hardware parameter:

Screen resolution: 1024*600PX

Displayer: 7" TFT

Memory: DDR3 1G

Touch type: resistance-type

System: LINUX

Weight: 550g

Power dissipation: ≤5W

Material: Plastic Enclosure

CPU: 4 core 1.4GHZ

Power Supply: AC/DC 24V

Flash: 4GB

Hole size: 210.5 * 146.50 mm

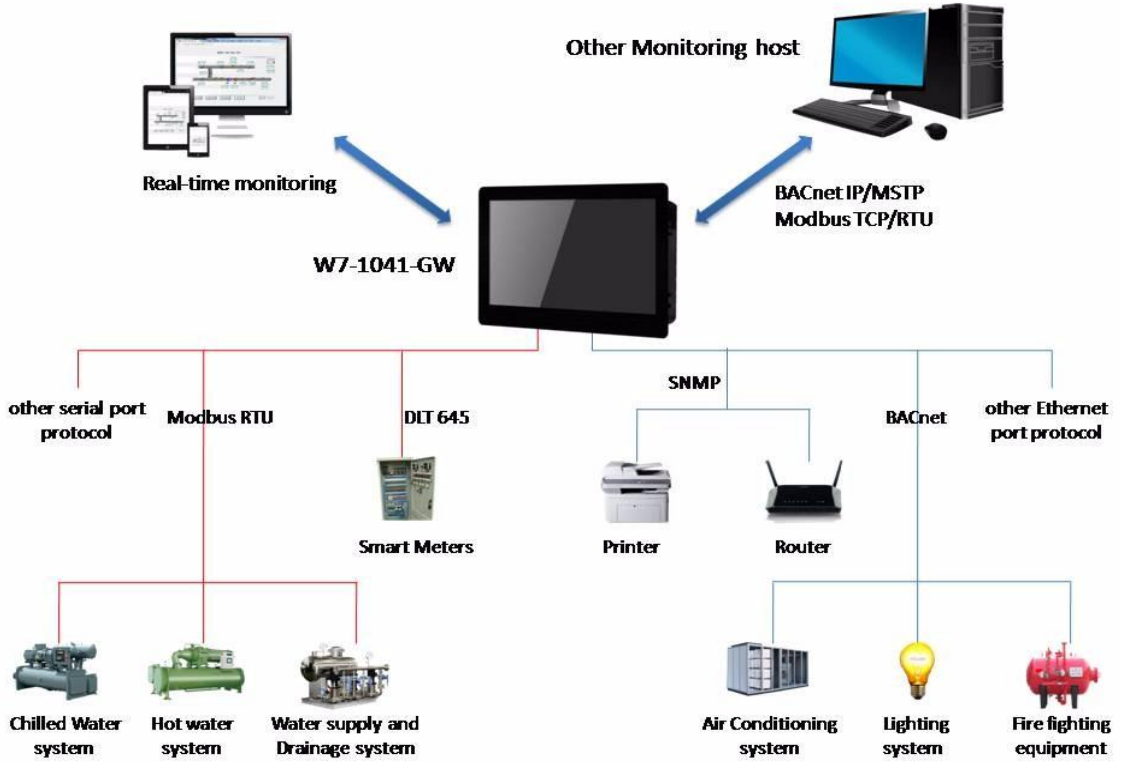
Port: 1 Ethernet, 4 RS485 serial ports
1 RS232 serial port, 1 debug serial port

Temperature: -20~60℃(working)
-25~65℃(storage and transportation)

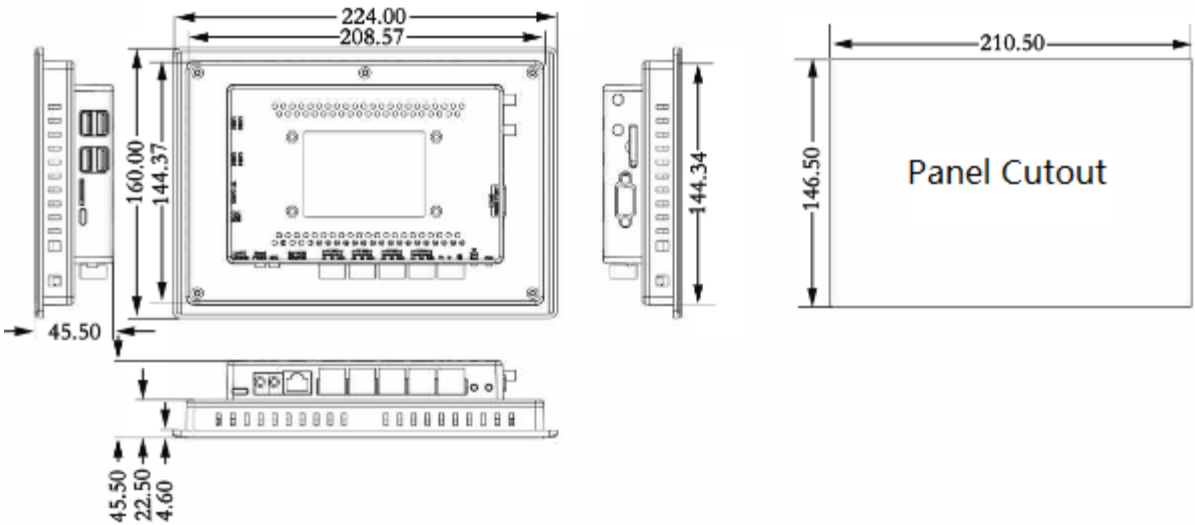
Network:
High performance 100M/10M adaptive industrial network card, support AUTO MDI/MDIX

Humidity:
20%~90%no condensation (work),
15%~95%no condensation (storage and transportation)

Application Principle Diagram



Product Size



W10-1041、W10-1041-GW

10" Touch Panel Product mode:W10-1041、W10-1041-GW

Functional description: W10-1041, W10-1041-GW is 10" WEB configuration touch panel . It is a new product independent research and development from Shanghai Sunfull , can collect real-time monitor data and directly into the configuration pages. Touch Panel has characteristic of conventional general configuration is easy to operate, and it can run on an embedded system features Compared with other configuration software.The biggest bright spot is based entirely on WEB development, the configurations of the user to create projects, can be downloaded to touch panel, phone、PAD or PC can access via browser, and open data interface by a third party system integration.

Application fields : W10-1041-GW support into the standard BACnet protocol standard Modbus protocol, or SMS alarm project to upload the cloud Applications in BA, or some unusual control equipment industry connections, such as PLC elevator fire lighting control system instrument meter, etc. So users can through the WEB configuration screen, or phone、PAD 、PC monitor to the field device.

Runtime environment:

OS : Windows XP/Win 7/Win8/Win10/Win Server 2003/Win Server2008/Win Vista etc.

Browser : IE11 (and above) 、 Safari、 Google Chrome、 firefox、 Opera etc.

Register Type&Num

Number of Registers is dynamic, each register can be builded up to 5120 points.

Supported BACnet type and number are shown below.

Supported Modbus type and number are shown below.

BACnet Register-type	BACnet Register-number	Modbus Register-type	Modbus Register-number
AI (Read only)	5120 (0~5119)	0X(Coil Status) (Read and Write)	5120 (1~5121)
AO (Read and Write)	5120 (0~5119)	1X(Input Status) (Read Only)	5120 (1~5121)
AV (Read and Write)	5120 (0~5119)	4X(Holding Register) (Read and Write)	5120 (1~10241)
BI (Read only)	5120 (0~5119)	3X(Input Register) (Read only)	5120 (1~10241)
BO (Read and Write)	5120 (0~5119)		
BV (Read and Write)	5120 (0~5119)		
MI (Read only)	5120 (0~5119)		
MO (Read and Write)	5120 (0~5119)		
MV (Read and Write)	5120 (0~5119)		

Notes:

1.4X and 3X register address = translocation register address *2+1

0X and 1X register address = translocation register address +1

2. The data type of 4X and 3X can only be Float

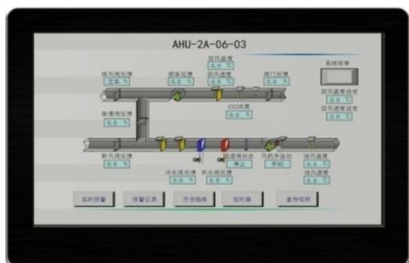
W10-1041、W10-1041-GW

W7-1041

W10-1041

W15-1041

10" Touch Panel Product mode :W10-1041、 W10-1041-GW (With gateway function)



Software Features:

-Green and free installation, support both Chinese and English;

-W10-1041-GW support was also converted to the BACnet server、 Modbus server 、 to upload the cloud;

-Support SMS E-mail and other communication methods to send alarm information;

-Support JS script to achieve logical control;

-Support user group management, configuration screen monitoring can set permissions;

-Supporting historical storage;

-A custom function that supports multiple forms of timer events to facilitate extended application;

-Support LAN, easy realization of remote viewing and control of touch screen via phone、 PAD、 PC;

-Add new private protocol support, within 2 weeks;

Hardware parameter:

Screen resolution: 1280*800PX

Displayer: 10" TFT

Memory: DDR3 1G

Touch type: resistance-type

System: LINUX

Weight: **-to be defined-**

Power dissipation: 8W

Material: metal shell

CPU: 4 core 1.4GHZ

Power Supply: AC/DC 24V

Port: 1 Ethernet, 4 RS485 serial ports
1 RS232 serial port, 1 debug serial port

Hole size: **-to be defined-**

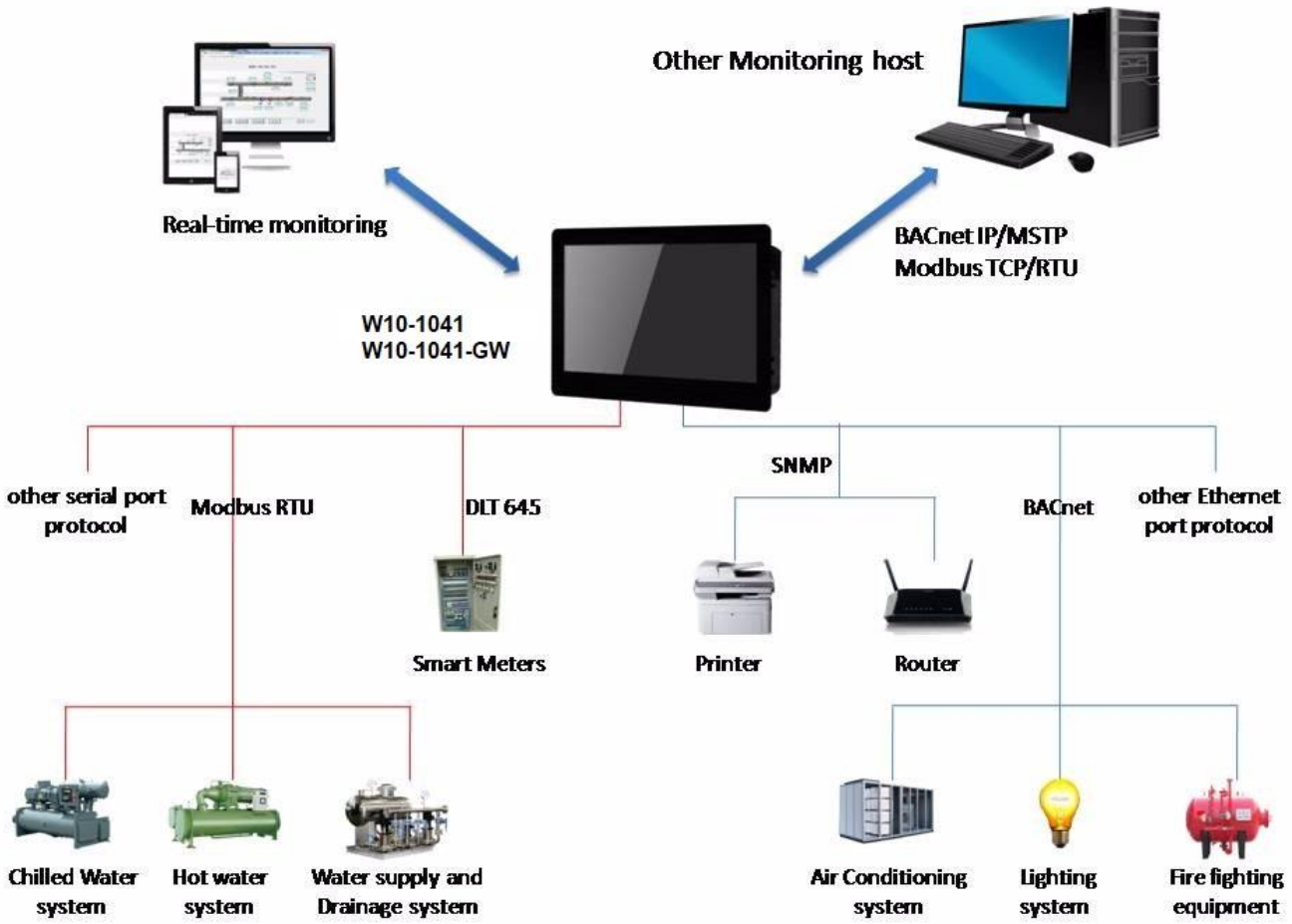
Flash: 4GB

Temperature: -20~60°C (working)
-25~65°C (storage and transportation)

Network:
1 High performance 100M/10M adaptive industrial network card, support AUTO MDI/MDIX

Humidity:
20%~90% no condensation (work)
15%~95% no condensation (storage and transportation)

Application Principle Diagram



W7-1041
W10-1041
W15-1041

Product Size

-to be defined-

W15-1041、W15-1041-GW

15" Touch Panel Product mode:W15-1041,W15-1041-GW

Functional description: W15-1041, W15-1041-GW is 7" WEB configuration touch panel . It is a new product independent research and development from Shanghai Sunfull , can collect real-time monitor data and directly into the configuration pages. Touch Panel has characteristic of conventional general configuration is easy to operate, and it can run on an embedded system features Compared with other configuration software.The biggest bright spot is based entirely on WEB development, the configurations of the user to create projects, can be downloaded to touch panel, phone、PAD or PC can access via browser, and open data interface by a third party system integration.

Application fields : W15-1041-GW support into the standard BACnet protocol standard Modbus protocol, or SMS alarm project to upload the cloud Applications in BA, or some unusual control equipment industry connections, such as PLC elevator fire lighting control system instrument meter, etc. So users can through the WEB configuration screen, or phone、PAD 、PC monitor to the field device.

Runtime environment:

OS : Windows XP/Win 7/Win8/Win10/Win Server 2003/Win Server2008/Win Vista etc.

Browser : IE11 (and above) 、 Safari、 Google Chrome、 firefox、 Opera etc.

Register Type&Num

Number of Registers is dynamic, each register can be builded up to 5120 points.

Supported BACnet type and number are shown below. Supported Modbus type and number are shown below.

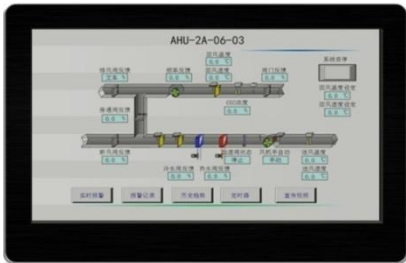
BACnet Register-type	BACnet Register-number	Modbus Register-type	Modbus Register-number
AI (Read only)	5120 (0~5119)	0X(Coil Status) (Read and Write)	5120 (1~5121)
AO (Read and Write)	5120 (0~5119)	1X(Input Status) (Read Only)	5120 (1~5121)
AV (Read and Write)	5120 (0~5119)	4X(Holding Register) (Read and Write)	5120 (1~10241)
BI (Read only)	5120 (0~5119)	3X(Input Register) (Read only)	5120 (1~10241)
BO (Read and Write)	5120 (0~5119)	Notes: 1.4X and 3X register address = translocation register address *2+1 0X and 1X register address = translocation register address +1 2. The data type of 4X and 3X can only be Float	
BV (Read and Write)	5120 (0~5119)		
MI (Read only)	5120 (0~5119)		
MO (Read and Write)	5120 (0~5119)		
MV (Read and Write)	5120 (0~5119)		

W7-1041

W10-1041

W15-1041

15" Touch Panel Product mode :W15-1041、W15-1041-GW (With gateway forwarding function)



Software Features:

-Green and free installation, support both Chinese and English;

-W15-1041-GW support was also converted to the BACnet server、Modbus server、to upload the cloud;

-Support SMS E-mail and other communication methods to send alarm information;

-Support JS script to achieve logical control;

-Support user group management, configuration screen monitoring can set permissions;

-Supporting historical storage;

-A custom function that supports multiple forms of timer events to facilitate extended application;

-Support LAN, easy realization of remote viewing and control of touch screen via phone、PAD、PC;

-Add new private protocol support, within 2 weeks;

Hardware parameter:

Screen resolution: 1920*1080PX

Displayer: 15.6" TFT

Memory: 1G

Touch type: resistance-type

System: LINUX

Weight: 3.3kg

Power dissipation: 8W

Material: metal shell

CPU: 4 core 1.4GHZ

Power Supply: AC/DC 24V

Port: 1 Ethernet, 4 RS485 serial ports
1 RS232 serial ports, 1 debug serial port

Cutout size(mm): L: 384. 1+3=387mm
W: 243. 5+2. 5=246mm

Flash: 4GB

Temperature: -20~60°C(working)
-25~65°C(storage and transportation)

Network:
1High performance 100M/10M adaptive industrial network card, support AUTO MDI/MDIX

Humidity:
20%~90%no condensation (work),
15%~95%no condensation (storage and transportation)

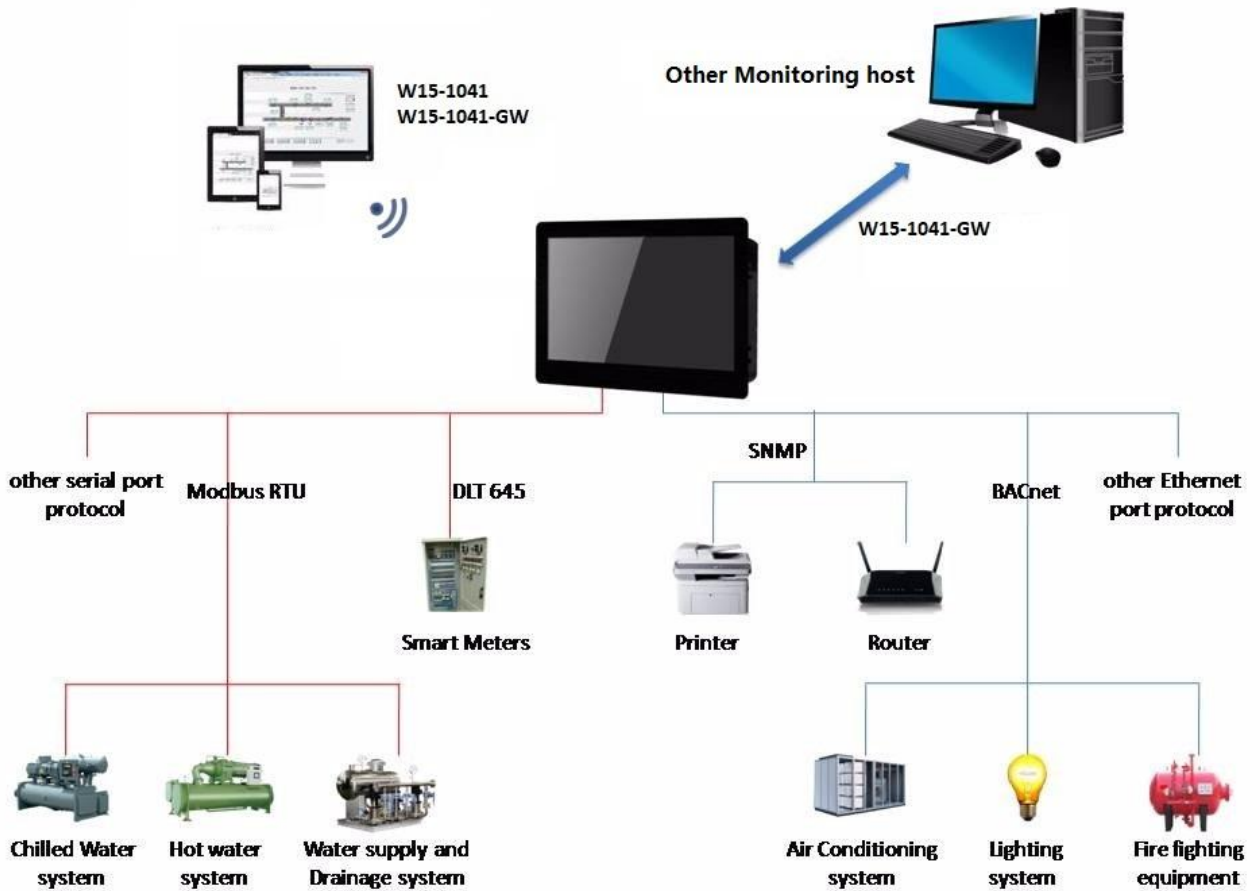
W7-1041

W10-1041

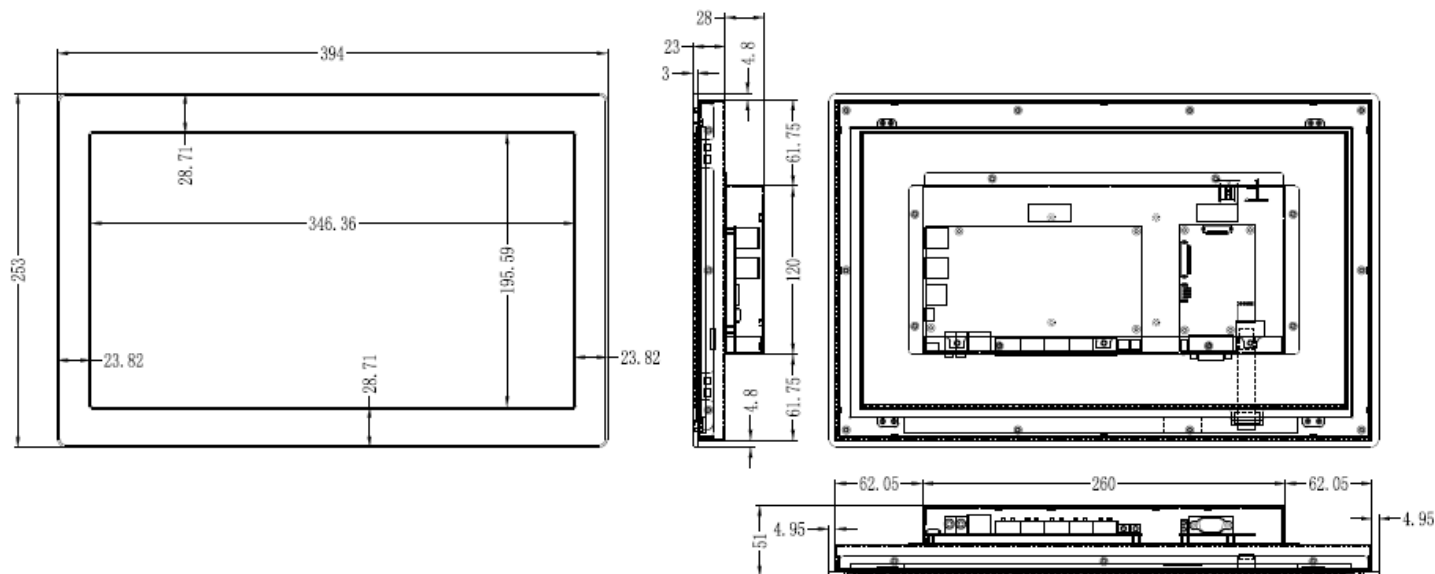
W15-1041

W15-1041、W15-1041-GW

Application Principle Diagram



Product Size



Protocols Available

Common

- 1 BACnet IP
- 2 BACnet MS/TP
- 3 Modbus RTU
- 4 Modbus ASCII
- 5 Modbus TCP
- 6 Modbus UDP
- 7 Modbus RTU_TCP
- 8 Modbus RTU_UDP
- 9 Modbus ASCII_TCP
- 10 Modbus ASCII_UDP
- 11 Modbus RTU Server
- 12 OPC XML-DA
- 13 SNMP

Simulation

- 14 Simulator

Calorimeter for EU

- 15 MBus_EnergyMeter_EN

Calorimeter for CN

- 16 MBUS_XinTuo
- 17 MBUS_MaiTuo

Energy Meter for CN

- 18 MBUS_AKE
- 19 MBus_YongGang
- 20 MBus_Zenner
- 21 MBus_EnergerMeter
- 22 MBus_EnergyMeter_HaiLin
- 23 Modbus_HaiLin_EnergyMeter

Water Meter for CN

- 24 MBus_WaterMeter
- 25 MBus_lyglhsb
- 26 ModbusRTU_Zenner
- 27 MBus_WaterMeter_LXSGY_15E

Flow Meter

- 28 Modbus Kent
- 29 Spirax SARCO M841
- 30 SC_FlowMeter
- 31 Modbus_CNM
- 32 MODBUS_LCD
- 33 Modbus_LDZ_6_GuangHua
- 34 Modbus_BiaoYi_WL

Elevator

- 35 Hitachi Elevator BA Interface
- 36 Mitsubishi Elevator SMOS-PS2
- 37 Mitsubishi Elevator KLR-F485
- 38 Otis Elevator BA Interface
- 39 ModbusRTU_Otis_BAS
- 40 Otis_Elevator_BA_Jen2
- 41 ModbusTCP_Thyssenkrupp_Elevator
- 42 ModbusRTU_Thyssenkrupp_Elevator
- 43 Mitsubishi Elevator SMOS-PS2_TCP
- 44 Modbus_Otis_Elevator
- 45 Modbus_Kone elevator
- 46 Modbus_Kone elevator ASCII
- 47 Mitsubishi Elevator MAXIEZ

Electricity Meter

- 48 IEC104

49 DLT645-1997
50 DLT645-2007
51 Modbus PM800
52 Modbus IEM3000
53 CDT
54 DLT645-CHINT
55 Modbus_woyat

Airconditon

56 Toshiba_Airconditioning
57 EMERSON_ACM03U1
58 Hisense_Airconditioning
59 Joton Tmaster
60 Modbus_DAIKIN_IRACC
61 DAIKIN_DRCH-R5
62 VotonThermostat
63 SysGreen_Airconditioning
64 Hitachi_Chiller
65 SANYO_DG-52GHT
66 Gree_BaseStationAirconditioning

PLC

67 Mitsubishi FX1S
68 Mitsubishi FX2N
69 Mitsubishi FX3U
70 Mitsubishi FX_485ADP_485BD
71 Mitsubishi Melsec_Q_Serial
72 Mitsubishi Melsec_Q_TCP
73 MEGMEET_MC200
74 Haiwell E/S PLC
75 Haiwell H/N PLC
76 Panasonic FP
77 XINJE PLC
78 DELTA_DVP

79 FATEK_FB
80 OMRON_FINS_UDP
81 OMRON_FINS_Serial
82 Saia_SBus_UDP
83 Toshiba_PROVISOR_TC200

Siemens PLC

84 Siemens S7-200 PPI
85 Siemens S7-200 Network
86 Siemens S7-300 Network
87 Siemens S7-1200 Network
88 XT55 GPS SERVER

Lighting control

89 KNXnetIP
90 KNXnetIP_MultiCast
91 DyNet
92 Modbus LDS
93 MicroPara_DR0816
94 MicroPara_DR1220
95 MicroPara_DH0416
96 LitePuter_DP_105E
97 LitePuter_PLNET
98 MicroPara
99 ULaiDe
100 LDS
101 E_Linker_ECWG485
102 Lutron_Telnet

UPS

103 SANTAK UPS
104 DELTA UPS ES3000
105 LEGRAND UPS
106 EMERSON_HIPULSE

107 EMERSON_Liebert_UPS
108 ModbusRTU_GE_UPS
109 EKSI_UPS
110 EMERSON_NXL

Solar Control

111 Cibsolar_CA
112 Kaseman GRC

Fire Alarm

113 JB-3208 CRT
114 Siemens Cerberus FS18
115 BOSCH_DS7400XI_TCP
116 BOSCH_DS7400XI
117 VESDA_Open_HLI_Protocol
118 YANRONG_YR_LC_TXAH
119 NOTIFIRE_NFS2_3030_CRT

Attemperator

120 LTM9662_485NET

Environmental Protection

121 SC_HuangMei

Radar

122 Hypersee_Radar
123 Hypersee_Alarm_Radar

Weight

124 Buhler_MEAF
125 METTLER_TOLEDO_SICS
126 YAOHUA_XK3190

Other Protocols

127 FFU
128 Panasonic MINAS A5
129 SINOLY JINE_JA05
130 SAUTER_CASE_VAV
131 saj110_AlarmSystem
132 EMEC_LDPH
133 RKC_CH402
134 YuDian_AI_Single_loop
135 GreenDaoFenMuJi
136 SOLIN
137 Condair_PH
138 BIGBANIAN_AIRC800
139 ACTI_SignalSelector
140 Modbus_TG01W
141 Ebara_Densan_S-BCS
142 Modbus_HOLTOP_HDK_09S_BA
143 YeeFung_Parking_System
144 Projector
145 HeFei_Ahhfat
146 BoosterBoiler_NEURON_NXQ
147 Epson_PJLink
148 Lumi_Gateway

Shanghai Sunfull Automation Co., LTD

Contact:Linda.Chen
TEL: +86 (21)58776098
Email: sales@opcmaster.com

<http://www.opcmaster.com>
<http://www.bacnetchina.com>

Carrier Protocols Available

Carrier Protocol

1 CCN_16DE1_4_1	16 CCN_19XR_PIC5_SCG_SR_20M200330
2 CCN_19XL02	17 CCN_23XR
3 CCN_19XL04	18 CCN_23XR_PIC3_04A
4 CCN_19XL06	19 CCN_30HXC
5 CCN_19XR05	20 CCN_30RBM
6 CCN_19XR07	21 CCN_30RBNGA
7 CCN_19XR08	22 CCN_30RBNGA02
8 CCN_19XR09	23 CCN_30RBRQ30
9 CCN_19XR10	24 CCN_30RBRQ40
10 CCN_19XR10D	25 CCN_30RBRQ50
11 CCN_19XR11	26 CCN_30XAXQXW
12 CCN_19XR12	27 CCN_30XQ
13 CCN_19XRE01	28 CCN_30XW
14 CCN_19XRV	29 CCN_30XWV
15 CCN_19XR_PIC5	30 CCN_30XWV_SH

Note: An additional fee is required,if carrier protocols can be supported.

If you would like to know more products, please pay attention to the wechat public account.

